



## THE ADVANCED PLATFORM

- Same basic racking approach installers have been using for decades
- US based supply chain with quality materials at a competitive price
- Rail based and Rail-free solutions with connection hardware for any application

### Core Components

Clamp



Rail



Base



**Accessories:** The Platform uses the same T-bolt and nut to accommodate all accessories.

- Module level power electronics mounting hardware
- Wire management accessories
- Security hardware
- Variety of connection hardware made to work seamlessly with our products
- Light, Medium, and Heavy rail to optimize pricing based on the design conditions

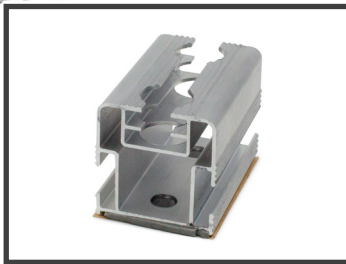
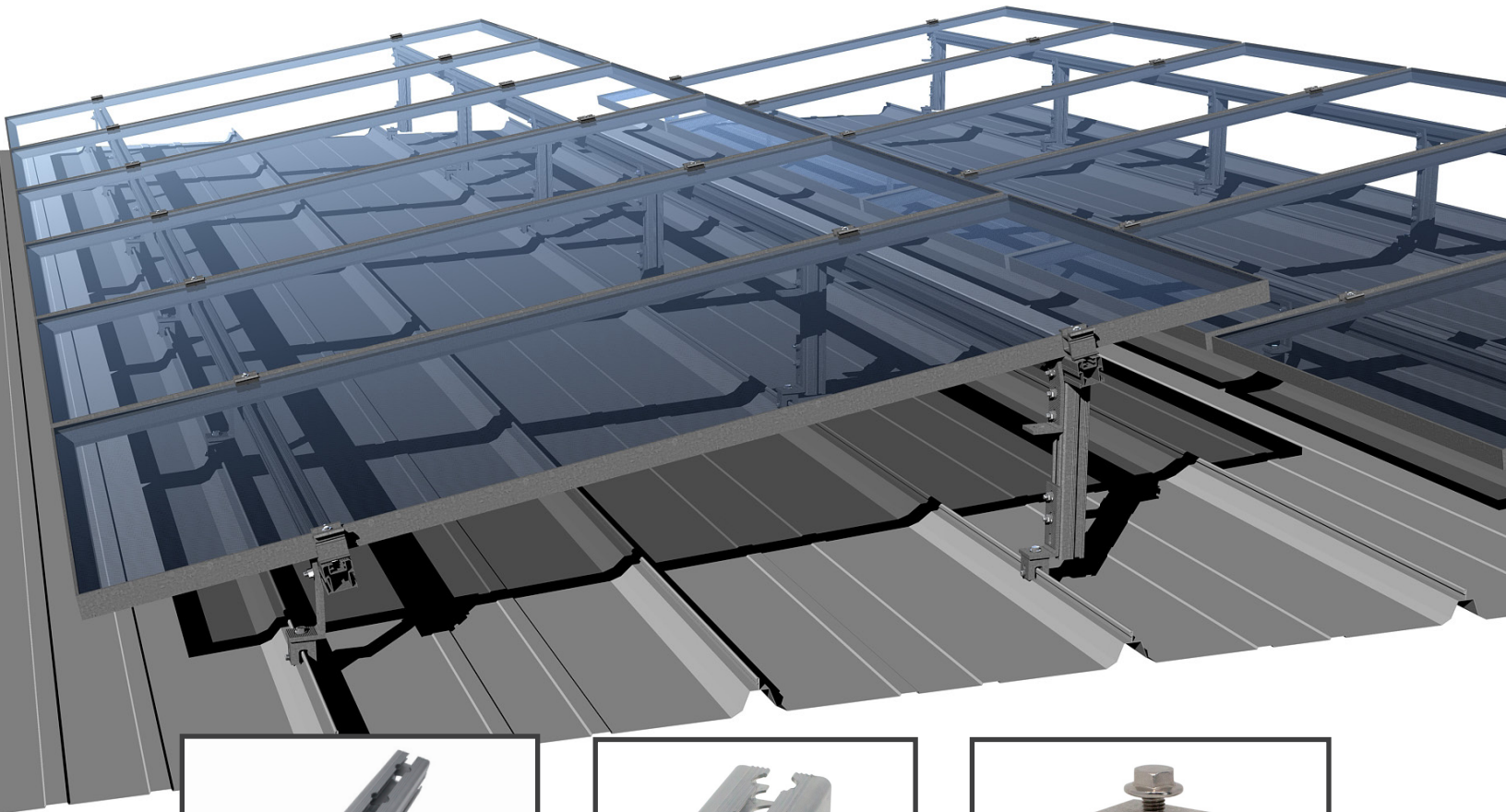
**Buy Online Now!**

**Rail-free solutions  
and Accessories.**

**Seam clamps, deck  
brackets & more.**

**[AdvancedRacking.com](http://AdvancedRacking.com)**

# ADVANCED RAIL BASED TILT METAL



Available with multiple connection hardware.

For more Technical Details, please visit: [AdvancedRacking.com/Downloads](http://AdvancedRacking.com/Downloads)

## Tech Specs:

UL 2703 Bonding & Grounding	Aluminum: 6006 & 6063
Tilt Angles: up to 20 degrees	Modules: All framed modules 30 - 45mm
Applications for wood or steel frame buildings	Wind: boundary layer wind tunnel
Standing seam and screw down connection	Warranty: 20 years
Pitch: up to 2/12 slope	Stainless Steel: 300 series stainless